

TADANO TL-250M-4 HYDRAULIC TRUCK CRANE

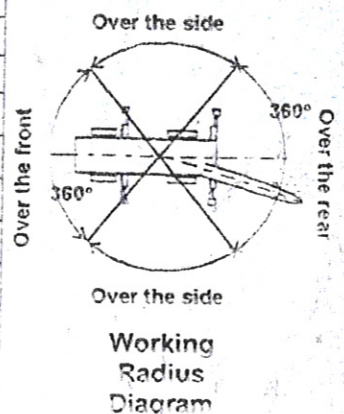
Chart 1: (a)

TOTAL RATED LOAD IN KILOGRAMS

THIS DOCUMENT SHOULD BE READ IN CONJUNCTION WITH THE A.M.L.

OUTRIGGERS FULLY EXTENDED WITH FRONT JACK DOWN (360°) OUTRIGGERS FULLY EXTENDED (OVER THE REAR - OVER THE SIDES)							
A (m) B (m)	10.5m	14.2m	18.0m	21.7m	25.5m	29.5m	33.0m
3.0	25.00	20.00	16.00				
3.5	25.00	20.00	16.00	12.00			
4.0	22.90	20.00	16.00	12.00	11.50		
4.5	21.00	20.00	16.00	12.00	11.50		
5.0	19.40	18.40	16.00	12.00	11.50	9.00	
5.5	17.70	16.80	14.75	12.00	11.50	9.00	7.00
6.0	16.20	15.30	13.70	12.00	11.50	9.00	7.00
7.0	13.70	12.65	11.95	11.00	10.00	9.00	7.00
8.0	11.40	10.65	10.55	10.20	8.90	8.20	7.00
9.0		8.85	8.75	9.20	8.05	7.45	6.25
10.0		7.20	7.10	7.50	7.30	6.75	5.70
12.0		5.00	4.90	5.25	5.60	5.65	4.80
14.0			3.50	3.85	4.15	4.30	4.10
16.0			2.50	2.85	3.15	3.30	3.40
18.0				2.15	2.40	2.55	2.65
20.0				1.60	1.85	2.00	2.10
22.0					1.40	1.55	1.65
24.0						1.20	1.30
26.0						0.90	1.00
28.0							0.75
30.0							0.50
a (°)	0~80	0~80	22~80	35~80	42~80	48.5~80	54~80

A : Boom Length
B : Working Radius
a : Boom Angle Range
for Unladen Condition



360°: Outriggers fully extended (6.1m) + Front jack
Over the sides: Outriggers fully extended (6.1m)
Over the rear: Outriggers fully extended (6.1 m)
Outriggers middle extended (4.0m)
Outriggers middle extended (2.08m)
Over the front: Outriggers fully extended (6.1m) + Front jack
Outriggers middle extended (4.0m) + Front jack

NOTES:

The total rated loads shown are for the case when the outriggers are set horizontally on firm ground. The values are based on the crane strength.

Total rated loads below bold lines do not exceed 75% of tipping load.

The weights of the slings and hooks (main winch hook: 280 kg, auxiliary winch hook: 60kg) are included in the total rated loads shown.

The total rated load is based on the actual working radius including the deflection of the boom.

The chart below shows the standard number of part lines for each boom length. The load per line should not exceed 3.2t for the main winch and 3.4t for the auxiliary winch.

BOOM LENGTH	10.5m	14.2m	18.0m	21.7m	25.5m	29.2m	33.0m	JIB / SINGLE TOP
NO. OF PART LINES	8	7	7	4	4	4	4	1

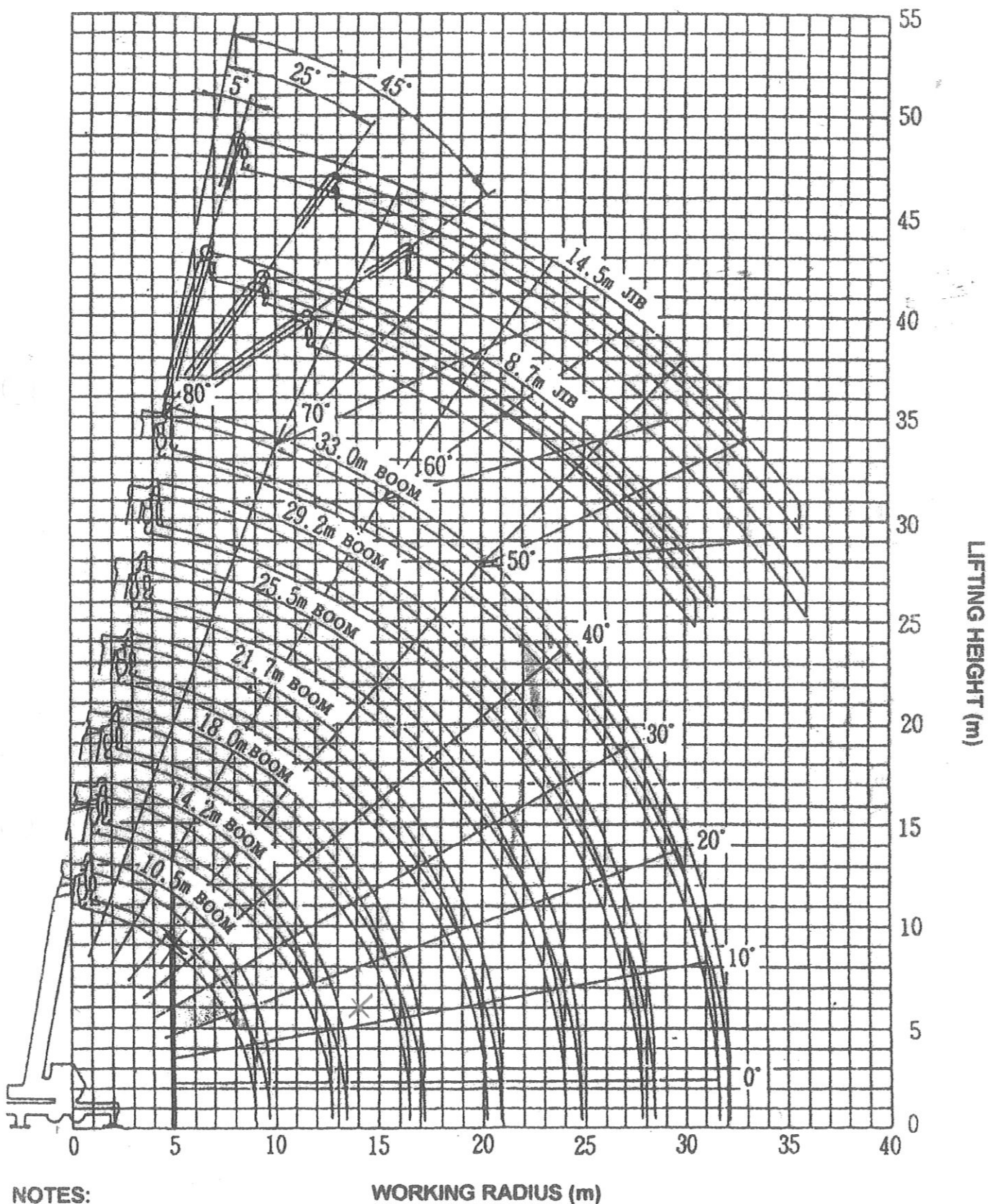
As a rule, free-fall operation should be performed only when lowering the hook alone. If a hoisted load must be lowered by free-fall operation, the load must be kept below 1/5th of the total rated load (the load per line must be 0.7t or less) and sudden braking operations must be avoided.

The total rated loads for the single top are obtained by subtracting the corresponding values below from the total rated load of the boom and must not exceed 3.4t.

BOOM LENGTH	10.5m	14.2m	18.0m	21.7m	25.5m	29.2m	33.0m
SUBTRACTED LOAD	0kg	100kg	100kg	200kg	200kg	250kg	250kg

TADANO TL-250M-4 HYDRAULIC TRUCK CRANE

WORKING RADIUS - LIFTING HEIGHT



NOTES:

WORKING RADIUS (m)

1. The deflection of the boom is not incorporated in the figure above.
2. The above chart is for the case where the outriggers are fully extended and where the front jack are used (over 360°)

TADANO TL-250M-4 HYDRAULIC TRUCK CRANE

Chart 1 (b)

TOTAL RATED LOAD IN KILOGRAMS

THIS DOCUMENT SHOULD BE READ IN CONJUNCTION WITH THE A.M.L.

OUTRIGGERS FULLY EXTENDED WITH FRONT JACK DOWN (360°) OUTRIGGERS FULLY EXTENDED (OVER THE REAR – OVER THE SIDES)												
C	33.0m + 8.7m JIB						33.0m + 14.5m JIB					
D	5°		25°		45°		5°		25°		45°	
F	B	E	B	E	B	E	B	E	B	E	B	E
80	7.9	3.00	10.7	1.70	12.5	1.00	9.9	2.00	14.2	0.90	17.5	0.60
77	10.2	3.00	12.9	1.70	14.5	1.00	12.6	2.00	16.6	0.90	19.6	0.60
76	11.0	3.00	13.6	1.70	15.2	1.00	13.4	1.85	17.4	0.90	20.3	0.60
75	11.5	3.00	14.3	1.67	15.8	0.96	14.2	1.74	18.1	0.87	21.0	0.57
70	15.2	2.20	17.5	1.44	18.9	0.86	18.2	1.35	21.9	0.80	24.4	0.53
65	18.5	1.75	20.8	1.25	21.9	0.80	21.9	1.10	25.4	0.72	27.5	0.49
60	21.7	1.40	23.7	1.10	24.7	0.75	25.5	0.90	28.7	0.64	30.3	0.46
55	24.6	1.10	26.5	0.95	27.2	0.70	28.9	0.73	31.7	0.56	33.0	0.43
50	27.3	0.70	29.0	0.65	29.5	0.60	31.9	0.55	34.4	0.45	35.3	0.40
46	29.3	0.45	30.8	0.45	31.1	0.40	34.1	0.35	36.4	0.30	36.9	0.25
45	29.8	0.40	31.2	0.40	31.5	0.35	34.5	0.30	36.8	0.25		
42	31.2	0.25	32.4	0.25								
a (°)	40 ~ 80		44 ~ 80		44 ~ 80		44 ~ 80		44 ~ 80		45 ~ 80	

A : BOOM LENGTH

B : WORKING RADIUS (m)

C : BOOM AND JIB LENGTHS

D : JIB OFFSET

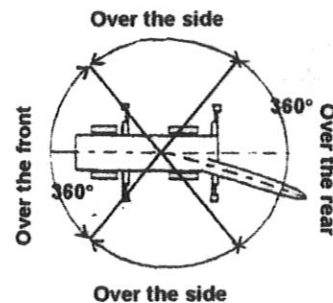
E : PERMITTED LOAD

F : BOOM ANGLE

a : BOOM ANGLE RANGE FOR UNLADEN CONDITION

- 360°: Outriggers fully extended (6.1m) + Front jack
 Over the sides: Outriggers fully extended (6.1m)
 Over the rear: Outriggers fully extended (6.1 m)
 Outriggers middle extended (4.0m)
 Outriggers middle extended (2.08m)
 Over the front: Outriggers fully extended (6.1m) + Front jack
 Outriggers middle extended (4.0m) + Front jack

Working
Radius
Diagram



NOTES:

- The total rated loads shown are for the case when the outriggers are set horizontally on firm ground. The values are based on the crane strength.
- Total rated loads below bold lines do not exceed 75% of tipping load.
- The weights of the slings and hooks (main winch hook: 280 kg, auxiliary winch hook: 60kg) are included in the total rated loads shown.
- The total rated load is based on the actual working radius including the deflection of the boom.
- The chart below shows the standard number of part lines for each boom length. The load per line should not exceed 3.2t for the main winch and 3.4t for the auxiliary winch.

BOOM LENGTH	10.5m	14.2m	18.0m	21.7m	25.5m	29.2m	33.0m	JIB / SINGLE TOP
NO. OF PART LINES	8	7	7	4	4	4	4	1

- As a rule, free-fall operation should be performed only when lowering the hook alone. If a hoisted load must be lowered by free-fall operation, the load must be kept below 1/5th of the total rated load (the load per line must be 0.7t or less) and sudden braking operations must be avoided.
- The total rated loads for the single top are obtained by subtracting the corresponding values below from the total rated load of the boom and must not exceed 3.4t.

BOOM LENGTH	10.5m	14.2m	18.0m	21.7m	25.5m	29.2m	33.0m
SUBTRACTED LOAD	0kg	100kg	100kg	200kg	200kg	250kg	250kg

TADANO TL-250M-4 HYDRAULIC TRUCK CRANE

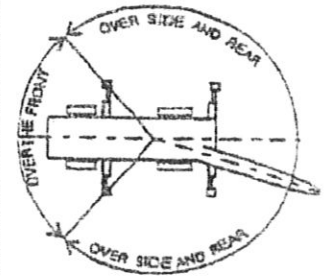
Chart 2: (a)

TOTAL RATED LOAD IN KILOGRAMS

THIS DOCUMENT SHOULD BE READ IN CONJUNCTION WITH THE A.M.L.

OUTRIGGERS MEDIUM EXTENDED WITH FRONT JACK DOWN (360°) OUTRIGGERS FULLY EXTENDED (OVER THE FRONT)							
A (m) B (m)	10.5m	14.2m	18.0m	21.7m	25.5m	29.5m	33.0m
3.0	25.00	20.00	16.00				
3.5	23.00	20.00	16.00	12.00			
4.0	20.00	20.00	16.00	12.00	11.50		
4.5	17.40	17.20	16.00	12.00	11.50		
5.0	14.00	13.80	13.60	12.00	11.50	9.00	
5.5	11.65	11.45	11.30	11.70	11.50	9.00	7.00
6.0	9.85	9.70	9.60	10.00	10.40	9.00	7.00
6.5	8.45	8.30	8.20	8.60	9.00	9.00	7.00
7.0	7.35	7.20	7.10	7.50	7.85	8.05	7.00
7.5	6.40	6.30	6.20	6.60	6.95	7.15	7.00
8.0	5.65	5.55	5.45	5.85	6.15	6.35	6.50
9.0		4.35	4.25	4.65	4.95	5.10	5.25
10.0		3.40	3.30	3.70	3.95	4.10	4.35
12.0		2.00	1.95	2.30	2.55	2.80	2.90
14.0			1.05	1.40	1.65	1.85	2.00
15.0			0.70	1.05	1.35	1.50	1.65
16.0				0.80	1.05	1.20	1.35
17.0					0.75	0.95	1.10
18.0						0.75	0.90
a (°)	0~80	0~80	22~80	35~80	42~80	48.5~80	54~80

A : Boom Length
B : Working Radius
a : Boom Angle Range
for unladen condition



Working
Radius
Diagram

NOTES:

- The total rated loads shown are for the case when the outriggers are set horizontally on firm ground. The values are based on the crane strength.
- Total rated loads below bold lines do not exceed 75% of tipping load.
- The weights of the slings and hooks (main winch hook: 280 kg, auxiliary winch hook: 60kg) are included in the total rated loads shown.
- The total rated load is based on the actual working radius including the deflection of the boom.
- The chart below shows the standard number of part lines for each boom length. The load per line should not exceed 3.2t for the main winch and 3.4t for the auxiliary winch.

BOOM LENGTH	10.5m	14.2m	18.0m	21.7m	25.5m	29.2m	33.0m	JIB / SINGLE TOP
NO. OF PART LINES	8	7	7	4	4	4	4	1

- As a rule, free-fall operation should be performed only when lowering the hook alone. If a hoisted load must be lowered by free-fall operation, the load must be kept below 1/5th of the total rated load (the load per line must be 0.7t or less) and sudden braking operations must be avoided.
- The total rated loads for the single top are obtained by subtracting the corresponding values below from the total rated load of the boom and must not exceed 3.4t.

BOOM LENGTH	10.5m	14.2m	18.0m	21.7m	25.5m	29.2m	33.0m
SUBTRACTED LOAD	0kg	100kg	100kg	200kg	200kg	250kg	250kg

TADANO TL-250M-4 HYDRAULIC TRUCK CRANE

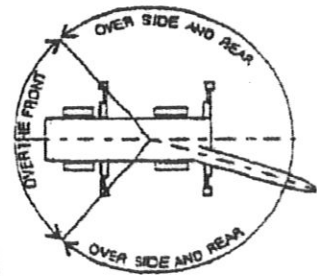
Chart 2: (c)

TOTAL RATED LOAD IN KILOGRAMS

THIS DOCUMENT SHOULD BE READ IN CONJUNCTION WITH THE A.M.L.

OUTRIGGERS MEDIUM EXTENDED (2.08m) OUTRIGGERS MINIMUM EXTENDED (OVER THE SIDES)							
A (m) B (m)	10.5m	14.2m	18.0m	21.7m	25.5m	29.5m	33.0m
3.0	10.00	9.90	7.50				
3.5	7.95	7.75	7.50	6.40			
4.0	6.50	6.25	6.10	6.40	5.50		
4.5	5.45	5.15	5.00	5.30	5.50		
5.0	4.60	4.30	4.20	4.50	4.70	4.10	
5.5	3.90	3.60	3.50	3.85	0.40	4.10	3.70
6.0	3.30	3.05	2.95	3.30	3.50	3.50	3.70
7.0	2.45	2.20	2.10	2.45	2.60	2.70	2.85
8.0	1.80	1.60	1.45	1.80	2.00	2.10	2.20
9.0		1.10	0.90	1.35	1.50	1.60	1.75
10.0				0.85	1.10	1.25	1.35
a (°)	0~80	0~80	22~80	35~80	42~80	48.5~80	54~80

A : Boom Length
B : Working Radius
a : Boom Angle Range
for unladen condition



NOTES:

- The total rated loads shown are for the case when the outriggers are set horizontally on firm ground. The values are based on the crane strength.
- Total rated loads below bold lines do not exceed 75% of tipping load.
- The weights of the slings and hooks (main winch hook: 280 kg, auxiliary winch hook: 60kg) are included in the total rated loads shown.
- The total rated load is based on the actual working radius including the deflection of the boom.
- The chart below shows the standard number of part lines for each boom length. The load per line should not exceed 3.2t for the main winch and 3.4t for the auxiliary winch.

BOOM LENGTH	10.5m	14.2m	18.0m	21.7m	25.5m	29.2m	33.0m	JIB / SINGLE TOP
NO. OF PART LINES	8	7	7	4	4	4	4	1

- is a rule, free-fall operation should be performed only when lowering the hook alone. If a hoisted load must be lowered by free-fall operation, the load must be kept below 1/5th of the total rated load (the load per line must be 0.7t or less) and sudden braking operations must be avoided.
- The total rated loads for the single top are obtained by subtracting the corresponding values below from the total rated load of the boom and must not exceed 3.4t.

BOOM LENGTH	10.5m	14.2m	18.0m	21.7m	25.5m	29.2m	33.0m
SUBTRACTED LOAD	0kg	100kg	100kg	200kg	200kg	250kg	250kg

TADANO TL-250M-4 HYDRAULIC TRUCK CRANE

Chart 2 (b)

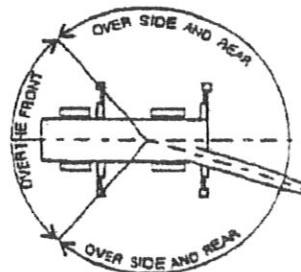
TOTAL RATED LOAD IN KILOGRAMS

THIS DOCUMENT SHOULD BE READ IN CONJUNCTION WITH THE A.M.L.

OUTRIGGERS MIDDLE EXTENDED (360°) OUTRIGGERS FULLY EXTENDED (OVER THE FRONT)												
C	33.0m + 8.7m JIB						33.0m + 14.5m JIB					
D	5°		25°		45°		5°		25°		45°	
F	B	E	B	E	B	E	B	E	B	E	B	E
80	7.9	3.00	10.7	1.70	12.5	1.00	9.9	2.00	14.2	0.90	17.5	0.60
77	10.2	3.00	12.9	1.70	14.5	1.00	12.6	2.00	16.6	0.90	19.6	0.60
76	11.0	3.00	13.6	1.70	15.2	1.00	13.4	1.85	17.4	0.90	20.3	0.60
75	11.7	2.65	14.3	1.67	15.8	0.96	14.2	1.74	18.1	0.87	21.0	0.57
70	15.0	1.45	17.5	1.15	18.9	0.86	18.0	1.10	21.9	0.80	24.4	0.53
66	17.5	0.80	19.9	0.65	21.3	0.60	20.8	0.60	24.5	0.45	26.8	0.35
65	18.1	0.65	20.4	0.55	21.8	0.50	21.4	0.50				
a (°)	64 ~ 80						64 ~ 80		65 ~ 80			

- A : BOOM LENGTH
 B : WORKING RADIUS (m)
 C : BOOM AND JIB LENGTHS
 D : JIB OFFSET
 E : PERMITTED LOAD
 F : BOOM ANGLE
 a : BOOM ANGLE RANGE FOR UNLADEN CONDITION

Working
Radius
Diagram



NOTES:

- The total rated loads shown are for the case when the outriggers are set horizontally on firm ground. The values are based on the crane strength.
- Total rated loads below bold lines do not exceed 75% of tipping load.
- The weights of the slings and hooks (main winch hook: 280 kg, auxiliary winch hook: 60kg) are included in the total rated loads shown.
- The total rated load is based on the actual working radius including the deflection of the boom.
- The chart below shows the standard number of part lines for each boom length. The load per line should not exceed 3.2t for the main winch and 3.4t for the auxiliary winch.

BOOM LENGTH	10.5m	14.2m	18.0m	21.7m	25.5m	29.2m	33.0m	JIB / SINGLE TOP
NO. OF PART LINES	8	7	7	4	4	4	4	1

- As a rule, free-fall operation should be performed only when lowering the hook alone. If a hoisted load must be lowered by free-fall operation, the load must be kept below 1/5th of the total rated load (the load per line must be 0.7t or less) and sudden braking operations must be avoided.
- The total rated loads for the single top are obtained by subtracting the corresponding values below from the total rated load of the boom and must not exceed 3.4t.

BOOM LENGTH	10.5m	14.2m	18.0m	21.7m	25.5m	29.2m	33.0m
SUBTRACTED LOAD	0kg	100kg	100kg	200kg	200kg	250kg	250kg